
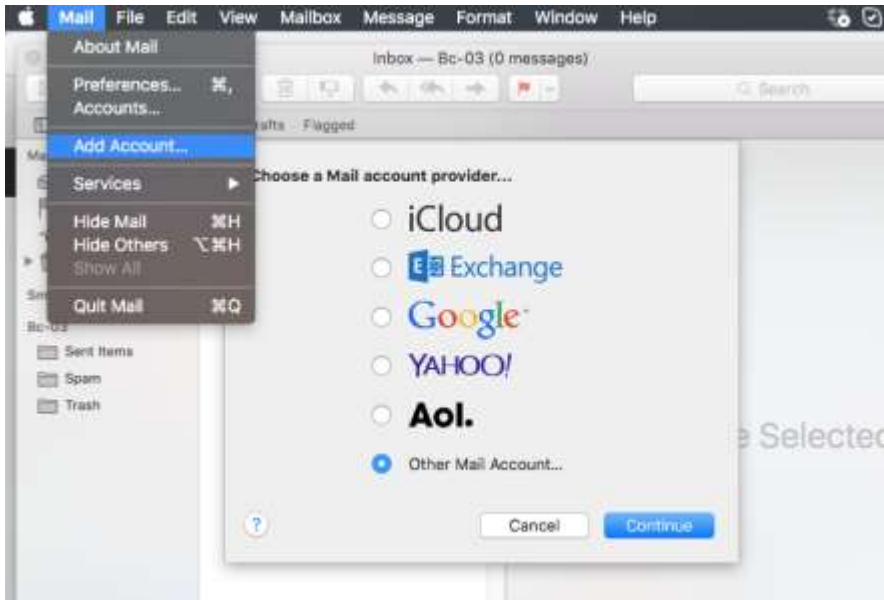


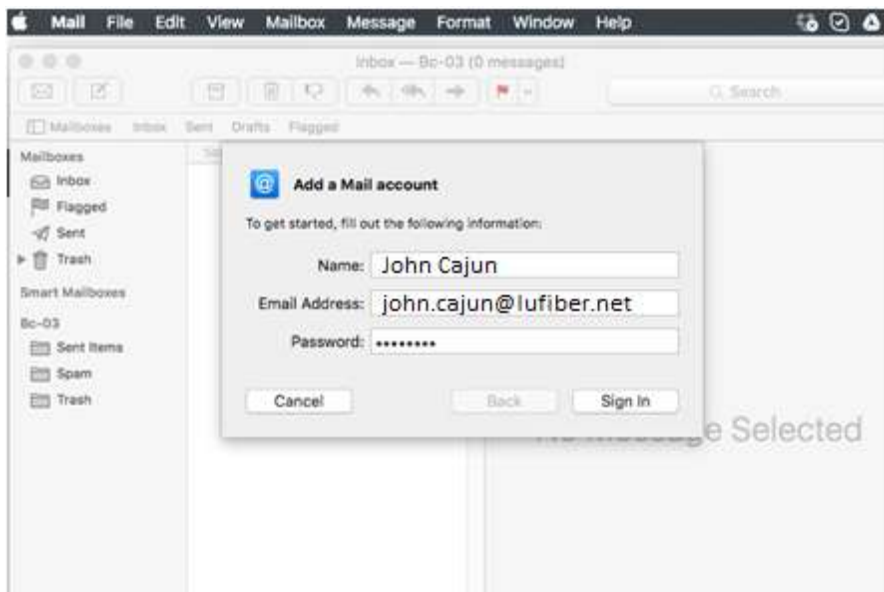
Setting up an Email Account with Mac Mail

 This guide may not support all versions Apple's email client. For specific information on using Mail for Mac OS X, visit [Apple.com/support/mail](https://apple.com/support/mail).

1. Click on the Mail top of your screen, then select the **Add Account** submenu than place a dot next to *Other Mail Account* and Press **Continue**



2. In the pop-up window, fill in your name and the Email address and click **Sign in** to proceed



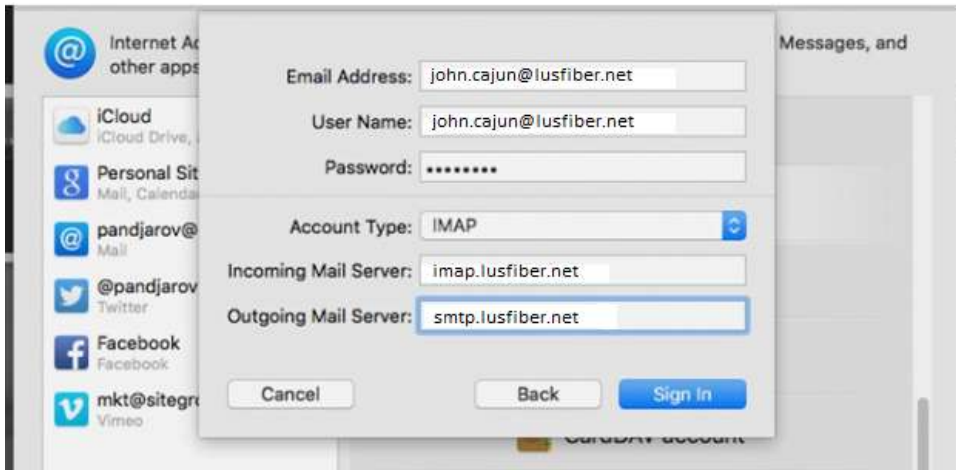
3. Fill in the server settings for your Email account:

- **Email Address:** - pre-filled with entries from previous screen
- **Username:** - full email address as username
example: john.cajun@lusfiber.net
It will be used both for the incoming and outgoing connection
- **Password:** - enter the password for your email account

Continue to next page

- **Account Type:** - it's set to IMAP by default. Unless you specifically want to use POP3
LUS Fiber recommends using IMAP
- **Incoming Mail Server:** - imap.lusfiber.net
- **Outgoing Mail Server:** - smtp.lusfiber.net

Once you fill in all the details, press **Sign In** to proceed



"If you are asked for additional information concerning your LUS Fiber account use the following"

IMAP (Incoming Mail)

- Server: imap.lusfiber.net
- SSL: Yes
- Port: 993

SMTP (Outgoing Mail)

- Server: smtp.lusfiber.net
- SSL: Yes
- Port: 465

4. You will be asked which programs you want to use this account with. Select Done



That's it! You can now use your email account with the Mac Mail application.