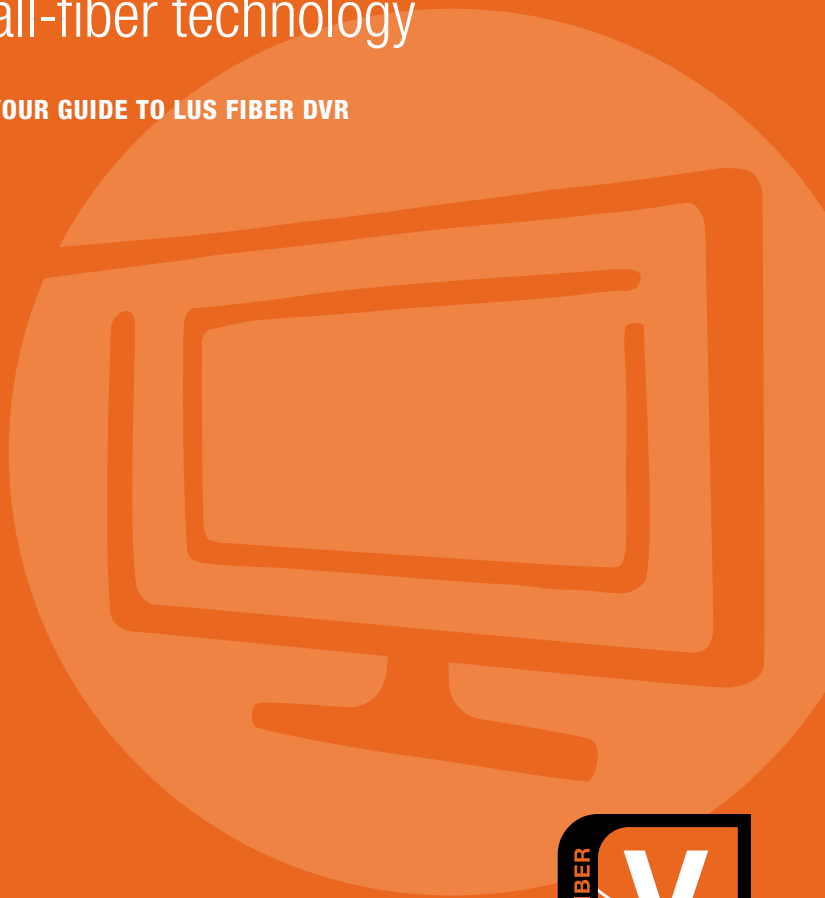




Welcome to television
reinvented with
all-fiber technology

YOUR GUIDE TO LUS FIBER DVR



KEYS TO CONTROLLING YOUR LUS FIBER VIDEO SERVICE



DEVICE SELECTION

Select between your Set-Top Box (HD digital receiver), TV, DVD player & auxiliary/misc. device.

REPLAY

Instant replay for DVR and live TV.

VIDEO ON DEMAND

Access to movies & more.

DIRECTIONAL PAD

Moves cursor in direction indicated by the arrows. Center button selects items. Browse channels while watching TV.

EXIT

Exits any screen or menu and returns to last channel viewed.

A

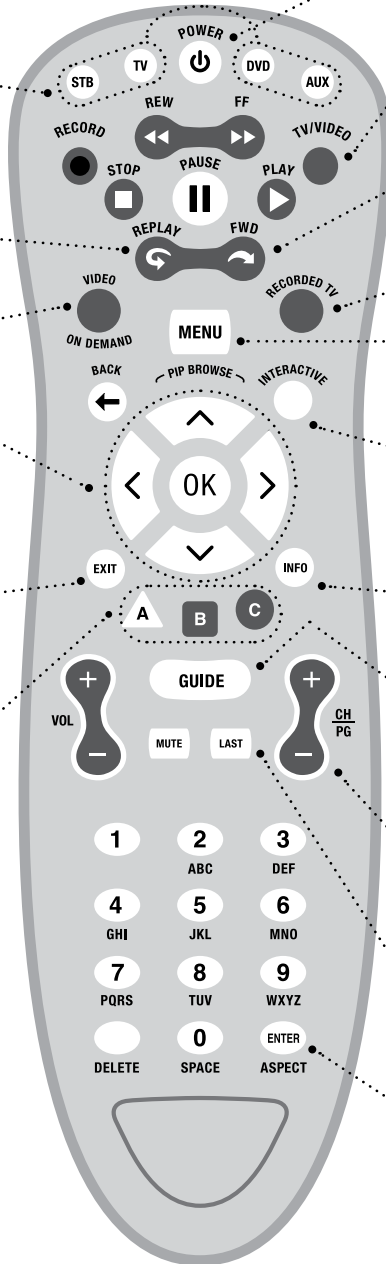
Decreases transparency of TV program info overlay.

B

Displays virtual keyboard.

C

Increases transparency of TV program info overlay. Accesses Web address bar in TV Web Portal.



POWER

Turns ON/OFF selected device.

TV/VIDEO

Switches between TV and Video inputs.

FORWARD

Advances to live programming (DVR).

RECORDED TV LIST

MAIN MENU

Accesses Main Menu navigation.

TV WEB PORTAL

Activates TV Web Portal menu.

PROGRAM INFORMATION

Displays additional program information.

ELECTRONIC PROGRAM GUIDE (Channel Guide)

Scrolls through Favorites lists with multiple clicks.

CHANNEL/PAGE

Scrolls through six channels at a time on the Electronic Program Guide.

LAST

Returns to last channel viewed.

ASPECT

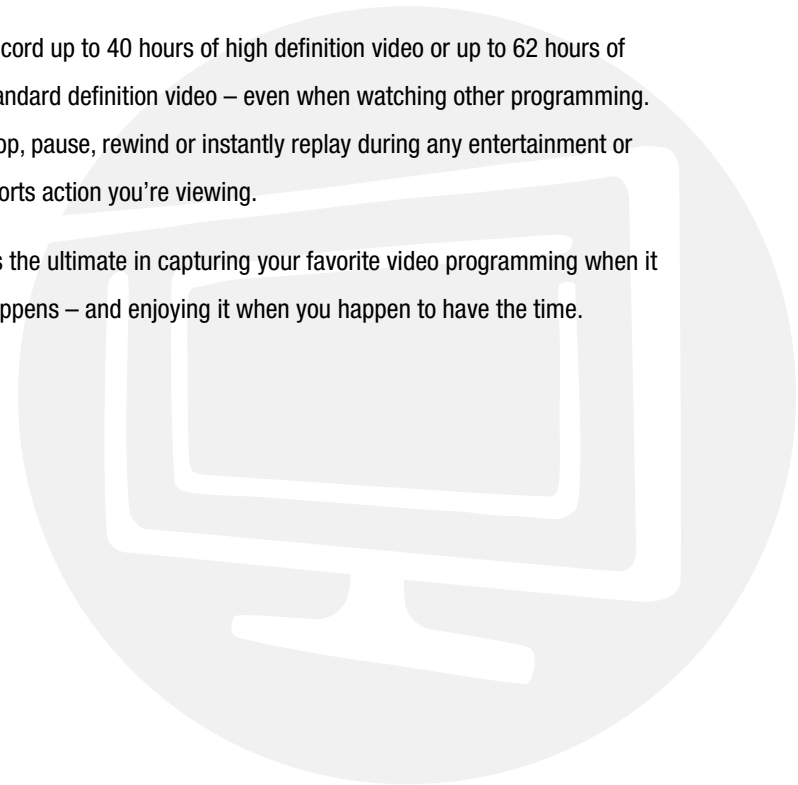
Displays virtual keyboard.

Never miss a moment with LUS Fiber HD/DVR service.

Your High-Definition Digital Video Recorder (HD/DVR) from LUS Fiber lets you enjoy your favorite video programming on your schedule.

Record up to 40 hours of high definition video or up to 62 hours of standard definition video – even when watching other programming. Stop, pause, rewind or instantly replay during any entertainment or sports action you're viewing.

It's the ultimate in capturing your favorite video programming when it happens – and enjoying it when you happen to have the time.



Your LUS Fiber subscription must include HD/DVR service to receive the features described in this section.

KEYS TO CONTROLLING YOUR LUS FIBER HD/DVR

These buttons make it easy to navigate controls on your remote for maximum entertainment from LUS Fiber HD/DVR service.

Go to a list of your recorded programs for playback or see a list of programs scheduled to be recorded in the future by pressing **RECORDED TV** on the remote.

Watch replays of special moments or game-breaking plays as many times as you want by pressing **REPLAY** to skip back 10 seconds.

When watching Live TV, you can rewind up to 60 minutes by pressing **REW**. After using Rewind, Replay or Pause, you can return to Live TV viewing by pressing **FWD**.

When viewing in Recorded Live, press **FF** to fast-forward through the program up to live TV. This button provides typical fast-forward function for live TV, Video On Demand and recorded TV viewing.

For fast recording of a program, just press **RECORD**. Follow prompts to confirm recording.

You can pause live TV or recorded content at any time by pressing **PAUSE**.

PAUSE LIVE TV

Your LUS Fiber HD/DVR makes what you're watching even more enjoyable with the capability to pause, rewind and replay live TV.

When you pause, rewind or skip back for instant replay, you're actually going into a temporary recorded buffer of the last 60 minutes on your *current* channel. If you change channels, the recorded buffer resets and your HD/DVR will immediately begin storing again on the new channel for up to 60 minutes.

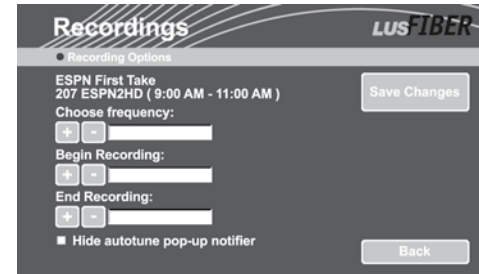
After 60 minutes, the first minute of the recorded buffer drops off and continues recording current programming – you always have up to 60 minutes of your current channel's programming stored.

NOTE: LUS Fiber HD/DVR service utilizes Internet Protocol Television (IPTV) technology. It is possible to use the service with your own third-party digital video recorder. Specific requirements for using a non-LUS Fiber DVR are available at LUSFIBER.com.

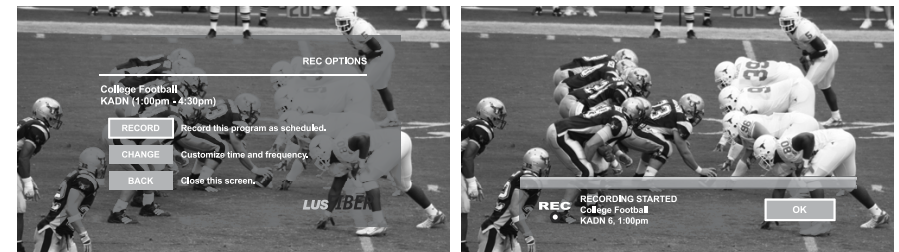
RECORD PROGRAMS

Your LUS Fiber HD/DVR makes it easy to record any programming any time, whether or not you're viewing it. Just follow the onscreen prompts – or press the **RECORD** button on the remote.

1. To set a recording in advance, go to the electronic program guide. Use the arrow buttons on the remote to highlight the program you want to record, then press **OK**. You'll then see the Program Information screen to set the recording.
2. In the Program Information screen, select **RECORD**.
 - You'll see a screen offering options to schedule a recording.



- Click the + or – buttons to select frequency, and begin and end recording times.
3. To set a recording while watching a program, press **RECORD** on the remote. The recording begins at that point in the program.
 - The Rec Options screen appears, where you can select to record the program as scheduled or to customize it by selecting **CHANGE** to set the time and frequency.
 - A Recording Started bar will appear; select **OK** to confirm.
 - You can stop a recording in progress by pressing **STOP** on the remote or by selecting it in the electronic program guide and pressing **STOP**. A confirmation screen will appear. Press **OK** to stop recording.



NOTIFICATIONS

Your LUS Fiber Digital Video Recorder can store approximately 62 hours of standard definition content or approximately 40 hours of high definition (HD) content.

To help manage your recording, the following messages may appear on your screen:

"This program will exceed recording capacity."

If you attempt to record a program that exceeds the storage capacity, this message appears.

"You have less than 10% disk space left."

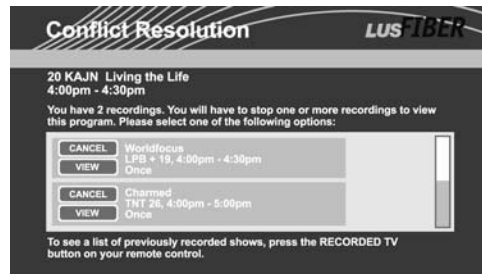
If your hard drive is more than 90% full, this alert reminds you to manage your storage space. See page XX, *Delete A Program*, for information on freeing up space on your storage disk.

"Recording of this content is not permitted."

Some programming providers may not allow recording of certain content. For example, Pay-Per-View programs cannot be recorded.

Recording Conflict

When any portion of two scheduled recordings overlaps, or when Autotune is set to change channels during a recording, a Conflict Resolution screen appears. Cancel or view one of the programs to resolve.



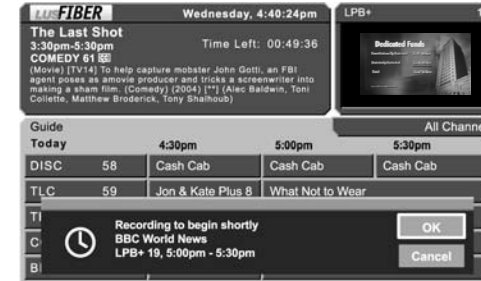
NOTE: You can record two programs at the same time. You can watch one while it's recording or you can watch a previously recorded program while two others are recording.

RECORDING INDICATORS

While a program is recording, you'll see the REC icon displayed in the electronic program guide and in the Recordings list. In addition, the red Record light on the HD/DVR Digital Receiver will glow.



Pop-ups alert you when your recordings are about to begin or end. These popups won't appear in the recording.



Pop-ups can be turned off on the Recording Options screen.

PLAY BACK A PROGRAM

Your LUS Fiber HD/DVR makes it simple to play back programs you've recorded. Either of the two options below take you to the Recordings screen where you can activate playback of recorded programs.



- On the Main Menu, select **RECORDINGS**.
- On the remote, press **RECORDED TV** ●.

1. Select **PLAY** beside the program you want to view.

2. Or, select the program title for more information, then select **PLAY**.

- If you previously stopped playback of the program, select the **RESUME** option on the screen to continue playback from where you stopped.
- **DISK** indicates how much recording space has been used.
- Selecting the program title displays the Recording Information screen with program details and a content summary.
- Selecting the **FUTURE REC** button on the screen brings up the Future Recordings list. From this screen, you can edit the programs you have set for recording. This list can also be accessed by selecting **RECORDINGS** on the Main Menu.

DELETE A PROGRAM

After a recorded program ends, or if you stop a program during playback, a prompt offers the option of deleting the program.

- Select **DELETE** to permanently delete the program; select **SAVE** to keep the program on your Recordings List.
- If you select **DELETE**, you'll then see the Recordings screen. Deleted programs are no longer listed and disk percentage reflects the deletions.

You may also delete programs from the list on the Recordings screen.

1. Check the box next to the programs you want to delete, then select **DELETE**.

- Delete all listed programs by clicking on **SELECT ALL**, then click **DELETE**.

2. A confirmation message appears. Select **DELETE** to permanently delete; select **SAVE** to keep the recorded program.



FREQUENTLY ASKED QUESTIONS ABOUT LUS FIBER VIDEO

Q: When a popup banner appears, such as a Reminder or Recording Beginning banner, will it be recorded along with my program?

A: No, these banners will not appear during playback.

Q: The recording was set but didn't record – why?

A: The recording request may not have been properly set.

Someone else in your home may have cancelled it.

If these circumstances don't apply, call LUS Fiber Customer Service.

Q: If I cancel my HD/DVR service and keep my LUS Fiber video service, does an LUS Fiber installer need to come to my home?

A: Yes. Please call Customer Service at 99-FIBER (993-4237) to obtain the proper digital video receiver.

Q: Why can't recorded programs from one digital video receiver be viewed from other receivers in a residence?

A: The hard drive that stores a recorded program works only with its own receiver. It cannot transmit to other receivers.

Q: Why can't recorded live TV from a previous channel be played after changing the channel?

A: Your LUS Fiber HD/DVR records up to 60 minutes of live TV beginning at the moment you tune to a channel. When you change channels, the recorded buffer resets and begins a new recording on the new channel. The best way to capture a program you want to see is to record it.

Q: If a recorded program is deleted, can it be recovered?

A: No, once a program is deleted, it is permanently removed from the HD/DVR hard disk.

Q: Can recorded content be copied to a DVD or other media?

A: No. LUS Fiber HD/DVR service doesn't offer copying service.

Q: How far back can a program be rewound on live TV?

A: You can rewind up to 60 minutes of the live TV channel you're *currently* watching. The 60-minute recording period begins when you tune to the channel.

Q: Can premium services and channels like View On Demand and Pay-Per-View be recorded?

A: No. LUS Fiber is contractually obligated to protect certain premium services and channels from content copying.

Q: Can audio/radio channels be recorded?

A: No. The LUS Fiber video HD/DVR records only video programming.

